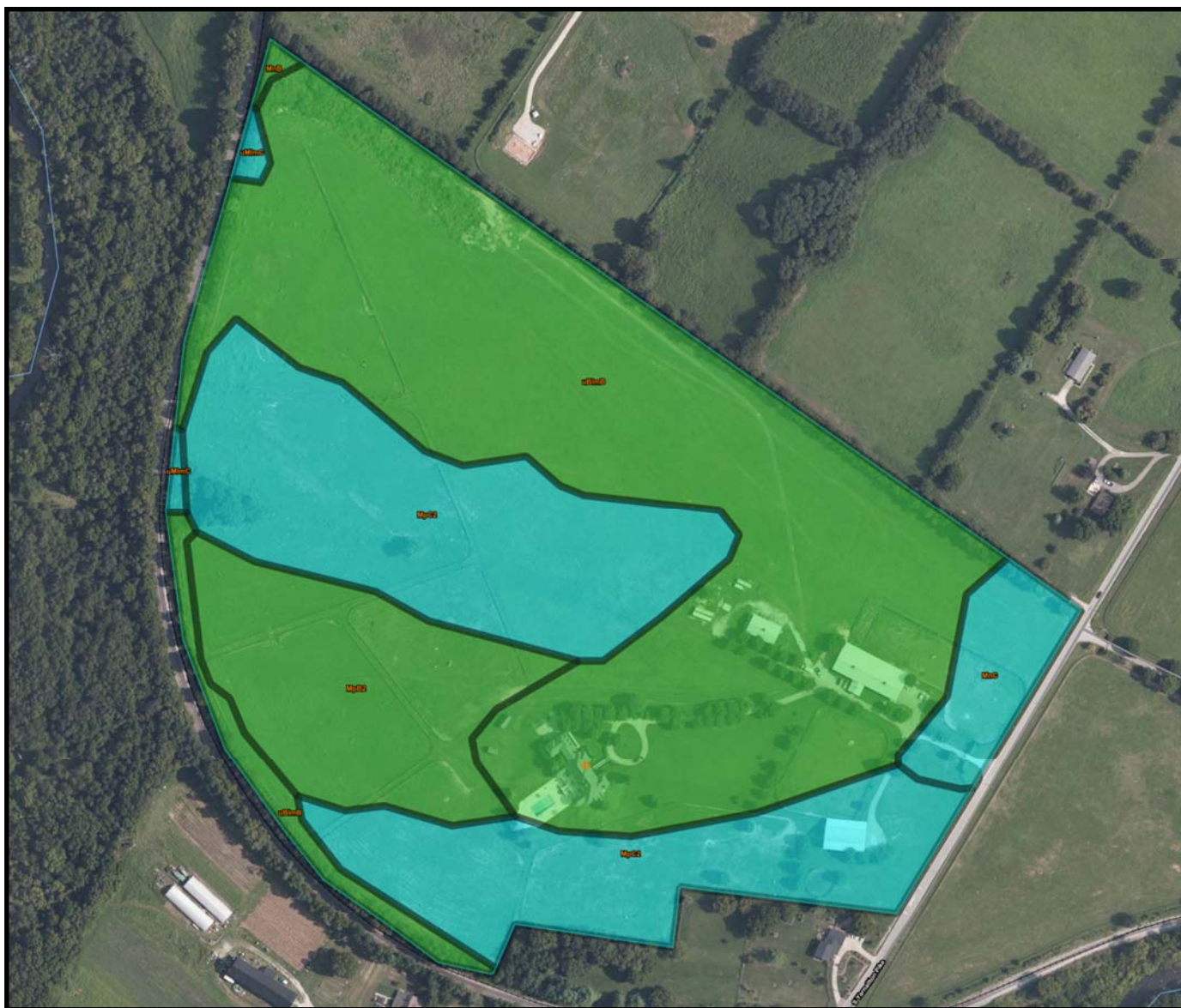


305 SOUTH YARNALLTON PIKE, LEXINGTON, KENTUCKY 40510



305 SOUTH YARNALLTON PIKE, LEXINGTON, KENTUCKY 40510



Tables — Farmland Classification — Summary By Map Unit

Summary by Map Unit — Fayette County Area, Part of Fayette County, Kentucky (KY643)

Summary by Map Unit — Fayette County Area, Part of Fayette County, Kentucky (KY643)

Map unit symbol	Map unit name	Rating	Acres in AOI	Percent of AOI
MnB	McAfee silt loam, 2 to 6 percent slopes	All areas are prime farmland	0.1	0.2%
MnC	McAfee silt loam, 6 to 12 percent slopes	Farmland of statewide importance	1.9	3.9%
MpB2	McAfee silty clay loam, 2 to 6 percent slopes, eroded	All areas are prime farmland	6.0	12.2%
MpC2	McAfee silty clay loam, 6 to 12 percent slopes, eroded	Farmland of statewide importance	15.2	31.1%
uBlmB	Bluegrass-Maury silt loams, 2 to 6 percent slopes	All areas are prime farmland	25.4	52.0%
uMlmC	Maury-Bluegrass silt loams, 6 to 12 percent slopes	Farmland of statewide importance	0.3	0.6%
Totals for Area of Interest			48.9	100.0%