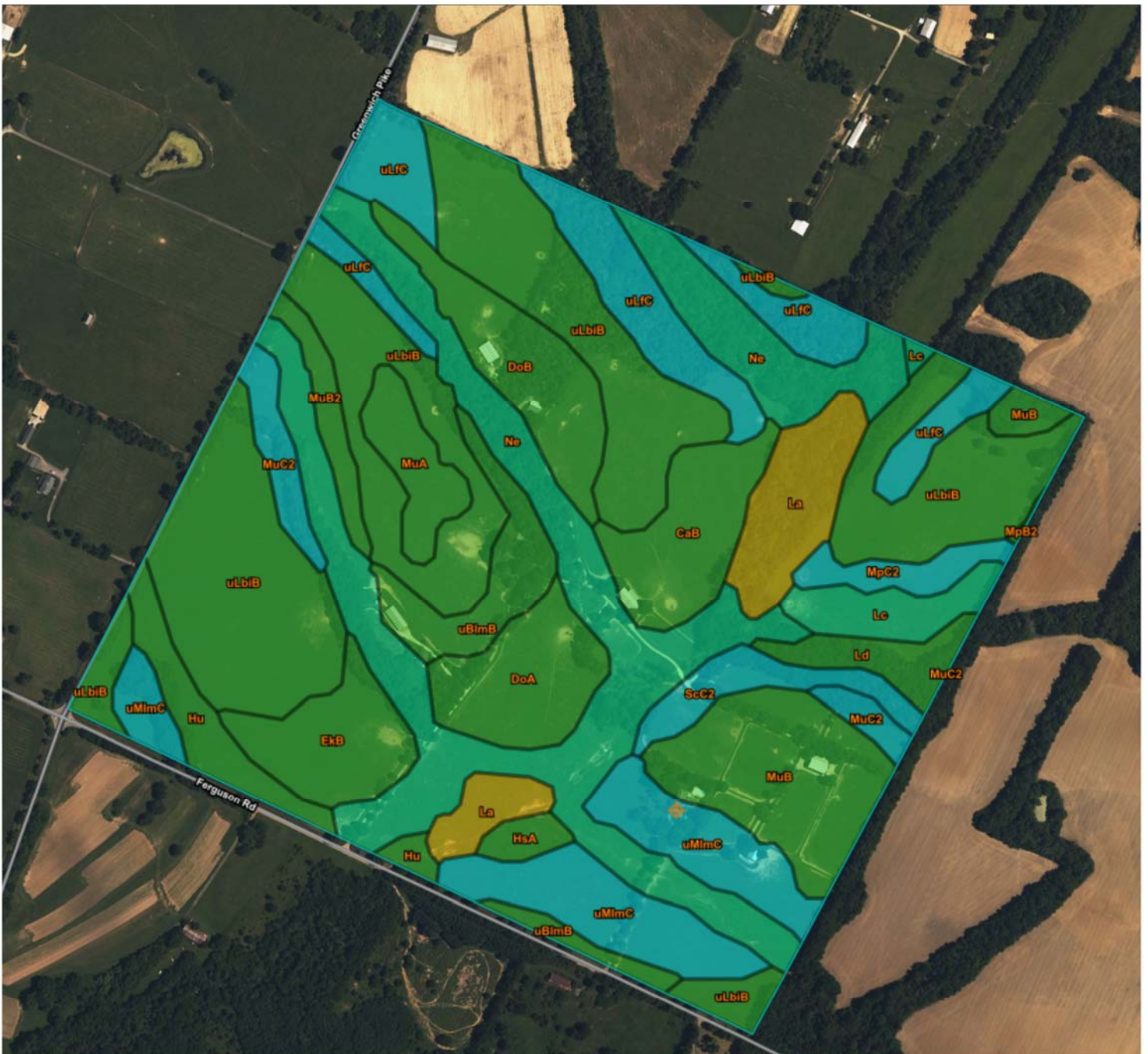


1901 Ferguson, Lexington





Summary by Map Unit — Fayette County Area, Part of Fayette County, Kentucky (KY643)

Map unit symbol	Map unit name	Rating	Acres in AOI	Percent of AOI
CaB	Otwood silt loam, 2 to 6 percent slopes, rarely flooded	All areas are prime farmland	7.0	3.6%
DoA	Donerail silt loam, 0 to 2 percent slopes	All areas are prime farmland	6.8	3.5%
DoB	Donerail silt loam, 2 to 6 percent slopes	All areas are prime farmland	7.5	3.8%
EKB	Elk silt loam, 2 to 6 percent slopes	All areas are prime farmland	6.2	3.1%
HsA	Huntington silt loam, 0 to 2 percent slopes, clayey substratum, occasionally flooded	All areas are prime farmland	1.2	0.6%
Hu	Huntington silt loam, 0 to 4 percent slopes, occasionally flooded	All areas are prime farmland	4.6	2.3%
La	Lanton silty clay loam (dunning)	Prime farmland if drained and either protected from flooding or not frequently flooded during the growing season	8.1	4.1%
Lc	Lawrence silt loam, 0 to 2 percent slopes, rarely flooded	Prime farmland if drained	3.7	1.9%
Ld	Lindside silt loam, 0 to 2 percent slopes, occasionally flooded	All areas are prime farmland	2.9	1.5%
MpB2	McAfee silty clay loam, 2 to 6 percent slopes, eroded	All areas are prime farmland	0.1	0.0%
MpC2	McAfee silty clay loam, 6 to 12 percent slopes, eroded	Farmland of statewide importance	2.4	1.2%
MuA	Mercer silt loam, 0 to 2 percent slopes	All areas are prime farmland	3.6	1.9%
MuB	Mercer silt loam, 2 to 6 percent slopes	All areas are prime farmland	11.9	6.1%
MuB2	Mercer silt loam, 2 to 6 percent slopes, eroded	All areas are prime farmland	2.4	1.2%
MuC2	Mercer silt loam, 6 to 12 percent slopes, eroded	Farmland of statewide importance	3.6	1.8%
Ne	Newark silt loam, 0 to 2 percent slopes, occasionally flooded	Prime farmland if drained	34.0	17.4%
ScC2	Salvisa silty clay loam, 6 to 12 percent slopes, eroded	Farmland of statewide importance	3.5	1.8%
uBlmB	Bluegrass-Maury silt loams, 2 to 6 percent slopes	All areas are prime farmland	6.4	3.3%
uLbiB	Lowell-Bluegrass silt loams, 2 to 6 percent slopes	All areas are prime farmland	50.5	25.8%
uLFC	Lowell-Faywood silt loams, 6 to 12 percent slopes	Farmland of statewide importance	14.9	7.6%
uMimC	Maury-Bluegrass silt loams, 6 to 12 percent slopes	Farmland of statewide importance	14.1	7.2%
<b>Totals for Area of Interest</b>			<b>195.5</b>	<b>100.0%</b>