



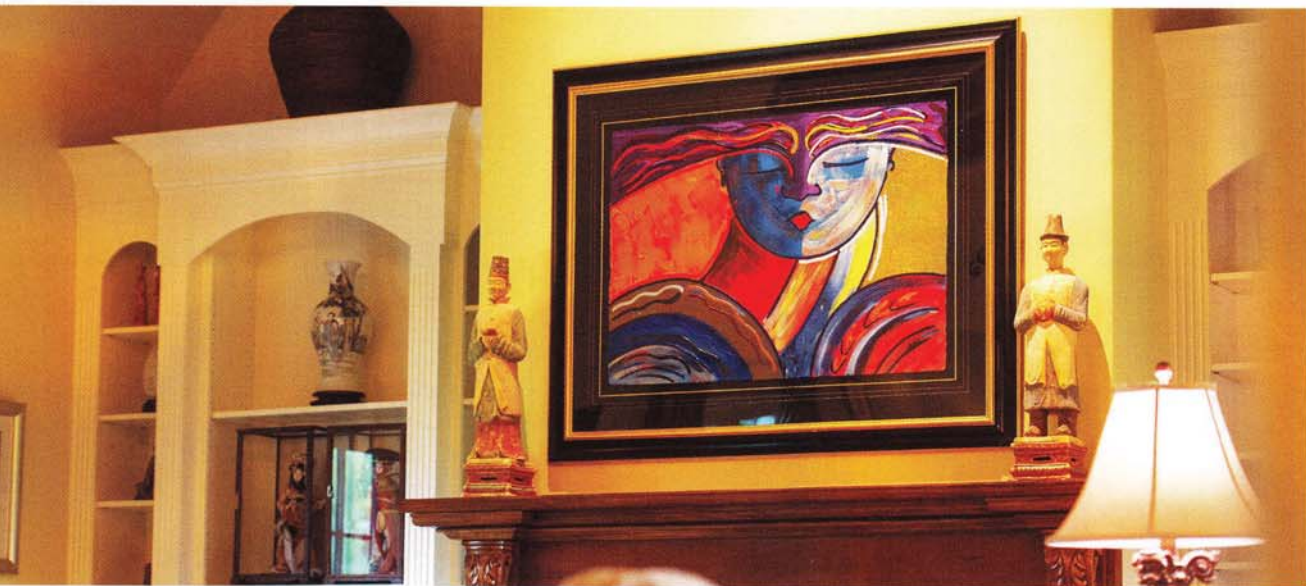
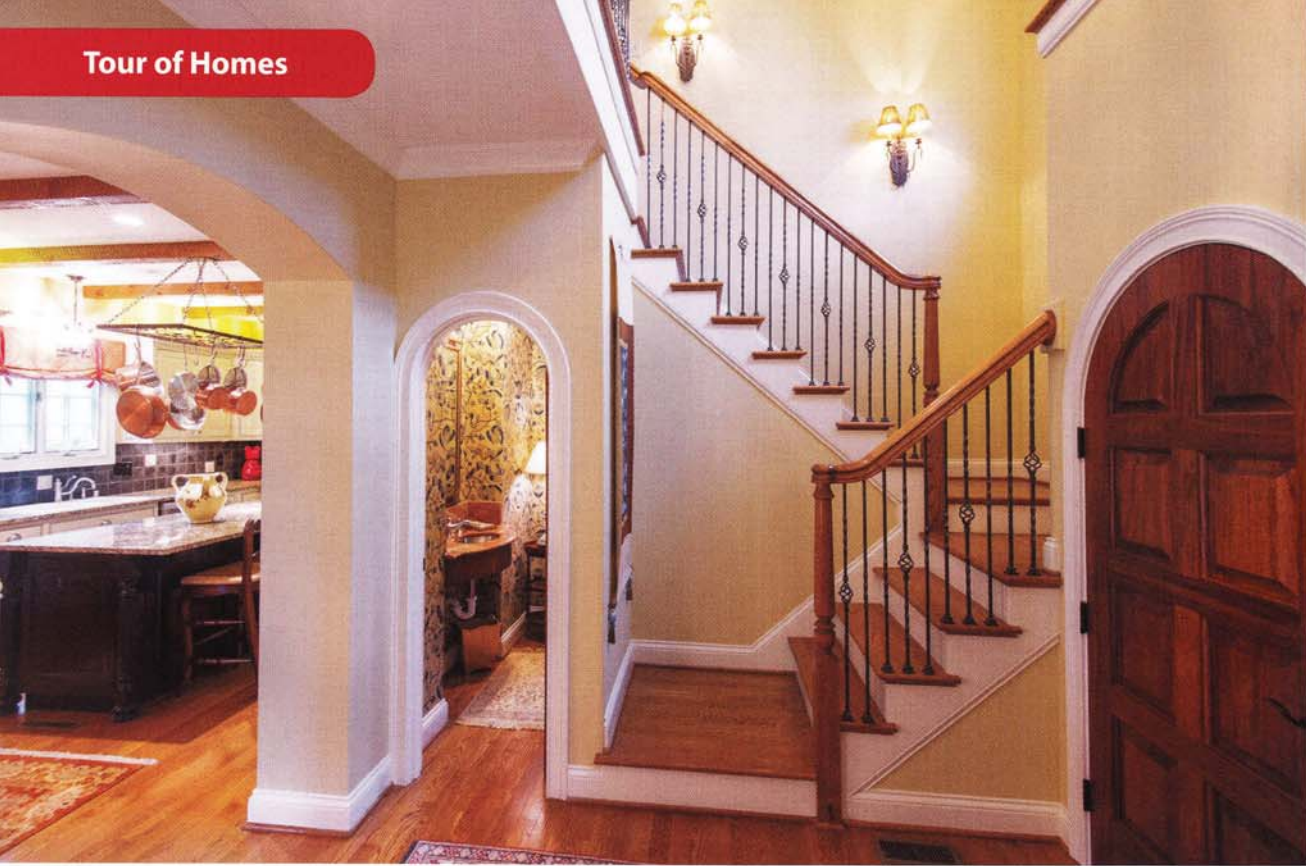
# *French-Country Perfection*

## *Situated on a Bluegrass Hillside*

When relocating from the West Coast, the owners of this marvelous Padgett Construction home scoured the country in search of a lovely place to land. They toured the East Coast and the mountains of Montana. But after a last-minute stop in Kentucky, they were won over by the sloping hills and absolute serenity of Horse Country. They built their classic French-country home on the bending pastureland near Athens-Boonesboro Road, surrounded at all angles by the luscious Kentucky landscape.

Approaching the expansive home from the corner drive, visitors will first notice an exquisite old-world stone exterior complemented by neatly arranged landscaping along a front walkway. The broad, majestic stone house is juxtaposed at the entryway with quaint wooden arched front doors that evoke a sense of warmth reminiscent of entering a humble cottage in the French countryside.

*by Elizabeth Troutman Adams, Photography by Shaun Ring*



Guests enter a receiving room leading to several vaulted-ceiling rooms that flow with natural continuation throughout the house. To the right of the receiving room, a staircase climbs to a pair of upper-level guest rooms. However, the majority of living and entertaining occurs on the first floor of the home, which upon being built in 2000 has continued to expand on the first level with gradual additions. From the left of the

foyer, visitors will enter an arched entryway to the Great Room where they will meet an old-world banquet table with formal cushioned chairs and topped with a decorative platter. Immediately, visitors will feel the homeowners' emphasis on hospitality and entertaining large groups.

Past the banquet dining table in the Great Room, visitors will find a parlor-style sitting area characterized



by a pair of textured buttercream couches sharing a glass-topped coffee table. At the far end of the room, a floral-printed sitting chair from Ryser's in London rests beside a fireplace where a large brilliantly colored piece of contemporary artwork hangs over a wood mantle. The far wall custom shelves on either side of the fireplace hold an international display of symbols representing the couple's international visits, including delicate Japanese dolls and hand-painted figures from Africa. A mix of both contemporary artwork and traditional landscape paintings around the room reveal the homeowner's appreciation for many forms and styles of art.

Keeping in their French-Country theme, the homeowners incorporated a repetition of classic French doors throughout the home to create breathable openness true to the iconic style. They adopted

a spacious French-Country layout of the home from Oklahoma designer Jack Arnold. With French doors as a substitute for traditional windows, natural light streams through the Great Room and the parallel hallway. The French doors reappear in rooms throughout the house and provide the homeowners with copious views of both sunrises and sunsets.

As with many rooms in the home, one of the most impressive structural features of the Great Room is the vaulted ceiling, from which a stately bronze chandelier hangs over the sitting area. The ceiling includes a row of eight wooden notched beams spanning horizontally across the top of the room from opposite sides of the angled ceiling. Many other rooms, including the Master Suite, include intricately shaped vaulted ceilings.



With three gently arching entryways on the right side, the Great Room transitions seamlessly into a hallway that stretches deeper into the home and eventually leads to the Master Suite. The hallway includes a wrought iron stairway to the basement, as well as a cheerful parlor table for two with a pair of pea green chairs upholstered in a whimsical rooster print. The hallway transforms into a narrow entertainment room where homeowners wind down in matching black leather lounge chairs before retiring to the Master Suite.

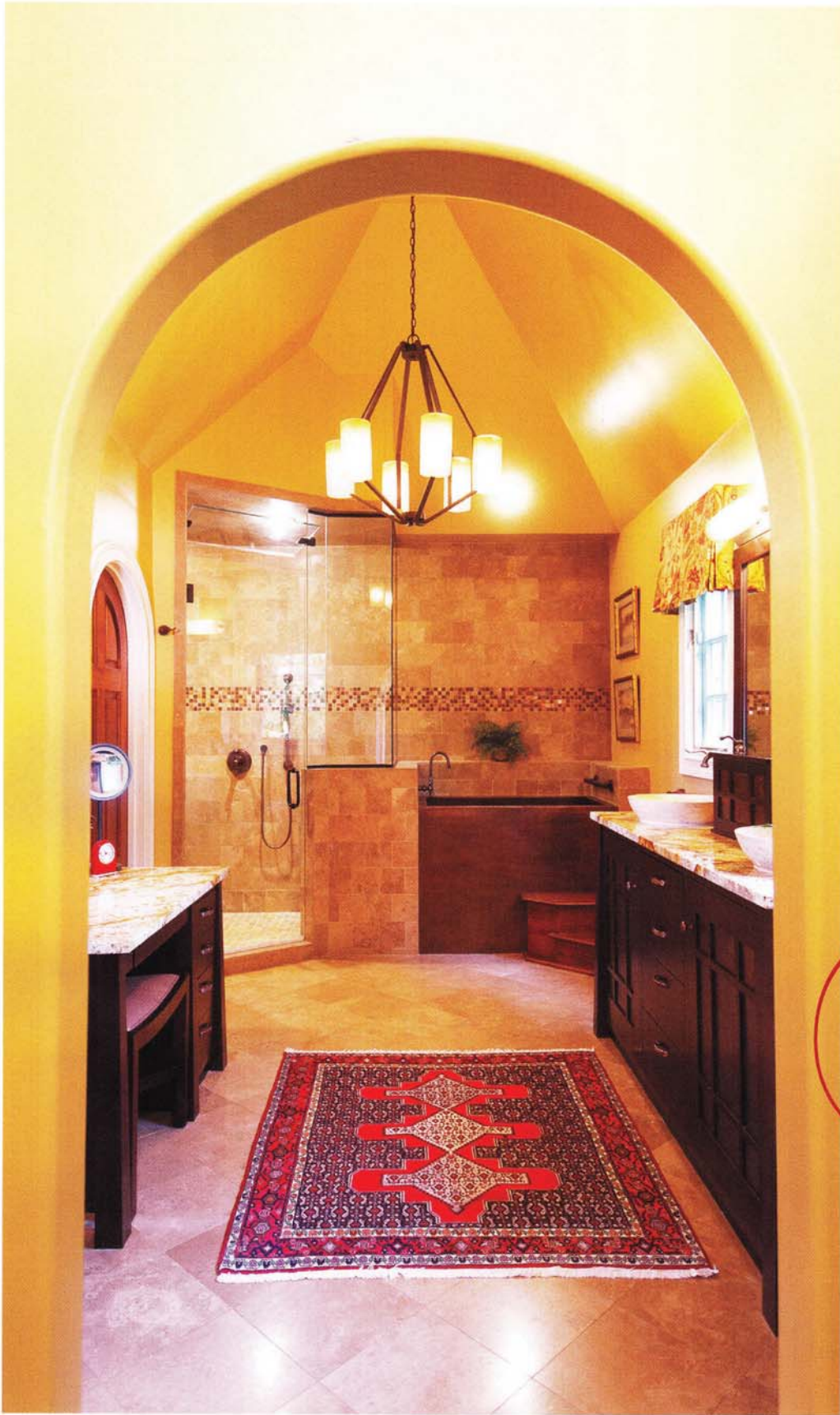




Through a set of arched wooden doors, the entertainment room opens to a romantic Master Suite coated in a shade of crimson. The deep, rich tones and bursts of vibrant red used throughout the room allude to a sense of privacy. The room is furnished with timeless pieces, including a granite-topped dresser, a tasseled coral Persian rug and a large wardrobe. Chocolate floor-length drapes shade the incoming light from the French doors.

Just beyond the Master Suite, the homeowners built an addition that has become a favorite room for enjoying quiet time and cappuccino. Practical but at the same time luxurious, the Morning Room contains a wall of custom book shelves and a built-in computer desk. At the center of the room, the homeowners enjoy a golden plush couch and tufted ottoman set in front of a private fireplace. Plenty of light awakens the homeowners in this room with thinner versions of the classic French doors decorated in red-printed linen drapes.

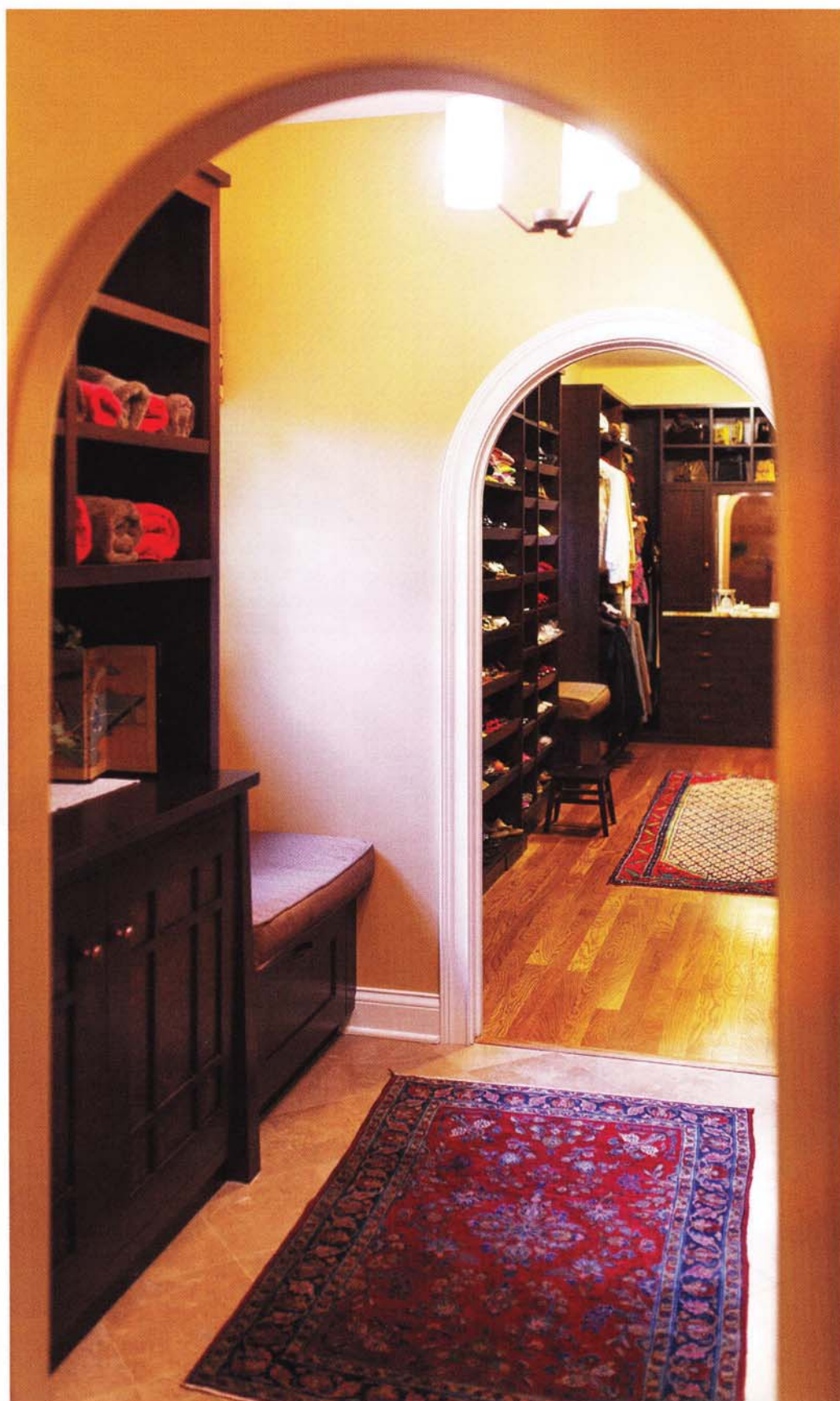




Attached to the Master Suite is a glowing Asian-inspired bathroom designed for de-stressing.



A chandelier and golden-beige walls create a spa-like mood. The his-and-her bathroom vanity boasts bowl sinks, an orange-speckled granite top and copper facing on the cabinets. A large walk-in corner steam shower is connected to a special feature – the homeowner’s box-shaped copper Japanese soaking tub. A walk-in linen closet with ceiling-high storage is connected to a walk-in closet with infinite storage space.





Returning to the receiving room, visitors can proceed forward into a kitchen area with ample built-in wall storage space in cream-colored distressed cabinets. Shiny copper pots dangle from a large pot rack over a granite island. Decorated in yellow, the kitchen once again represents the French-Country theme embraced throughout the home. Rustic details in the kitchen include the familiar series of wooden notched beams spanning across the ceiling, a refined grandfather clock and wood stools with wicker seating.







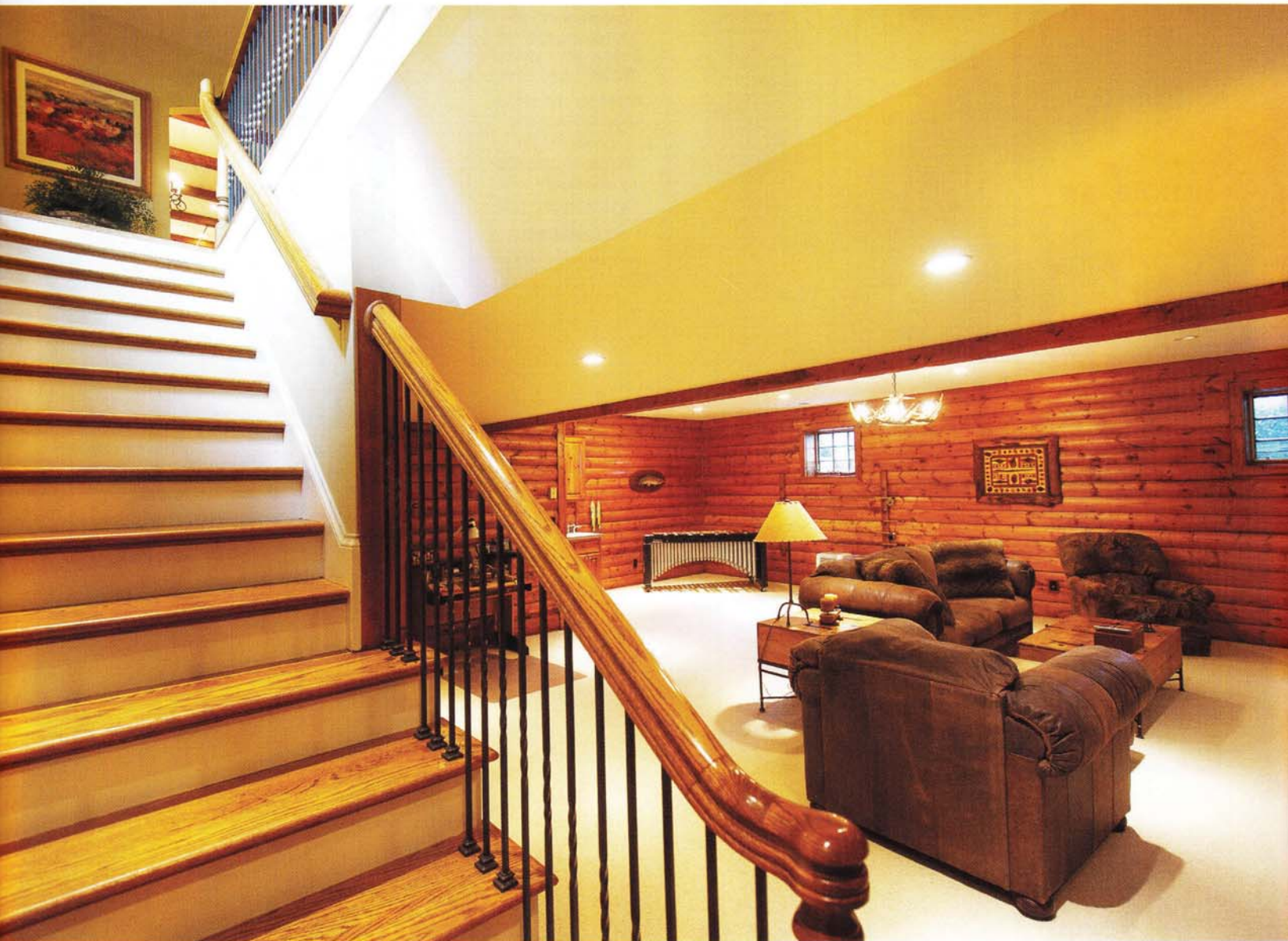
**B**

Because the homeowners found a need for additional space for entertaining, a second expansive living space was added with double entryways from the hallway and kitchen. The entryways are parallel to a sophisticated and convenient built-in bar. Custom built-in shelving on the left wall again provides a place for the homeowners to display artwork and portraits of their family. The hardwood floors of this wide-open room are topped with a vast muted-red, olive and beige Persian rug. An iron chandelier with decorative grey beading hangs over a set of burgundy-black blended leather couches and a tufted ottoman at the center of the room. At the far end of the room, two burnt red sitting chairs and a distinctive floor lamp are situated beside an additional fireplace.





Venturing to the basement of the home, visitors will discover the homeowners' enthusiasm for the outdoors. The walls of the basement are covered with wood slats mimicking the exterior build of a log cabin.





The basement features rustic leather couches and symbols of outdoor adventures, including a hanging reindeer antler light fixture, framed portraits of wildlife on the walls and fishing poles are strewn across a stone fireplace. The basement holds other personal treasures, including musical instruments and an old sewing desk, revealing more details about the homeowners and their adventures before settling in Kentucky.



# On

the backside of the home, a patio constructed of artfully curved grey stones opens to magnificent views of the homeowners' horse pastures.

